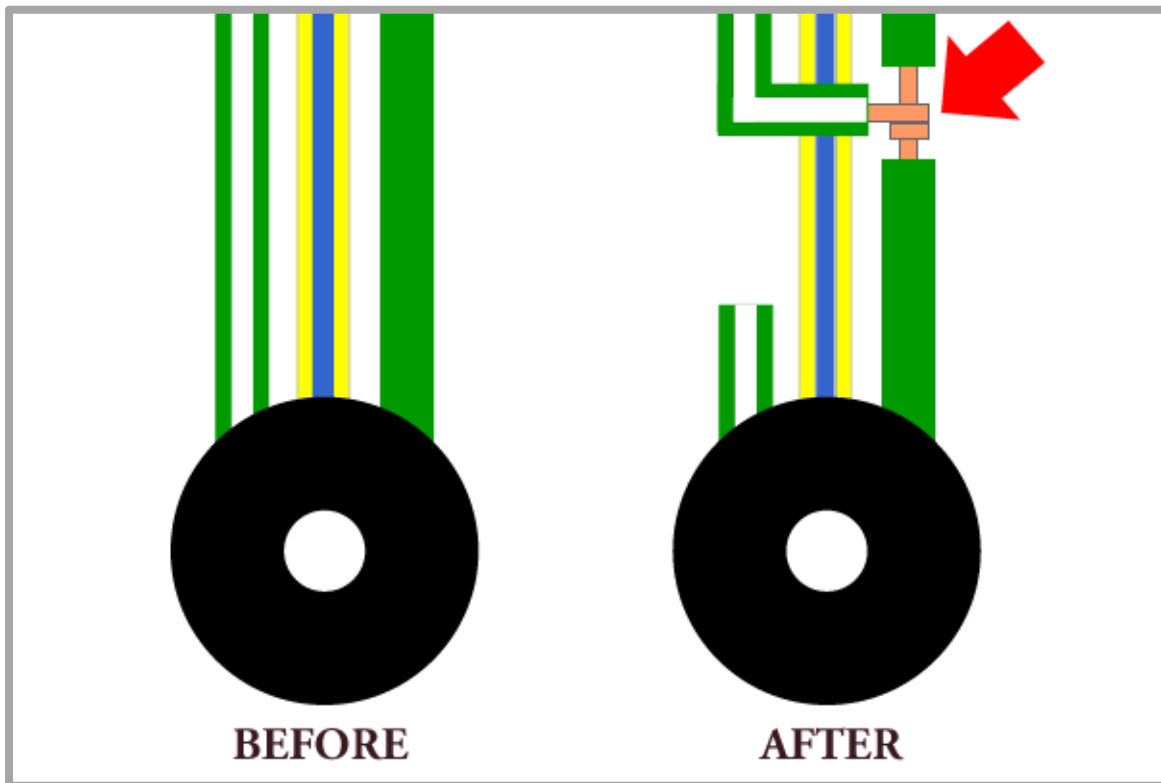


## BYPASSING THE SIDESTAND (KICKSTAND) KILL SWITCH

This procedure will allow the warning light to function while bypassing the “kill” feature”.

This procedure is probably not recommended by most group members. I will not recommend it, though it could be very handy if you are stranded because of the kill switch. This modification makes it possible to ride away with your kickstand DOWN. If you choose to do this, please pay attention to the WARNING LIGHT.



No need to remove the switch. Just remove the lower left panel to access the wire bundle.

Clip the Green/White wire a couple of inches or more from the switch. This leaves enough to restore it to normal working order later, if you choose.

DO NOT clip the other wires. The Yellow/Blue wire goes to the light so LEAVE IT ALONE.

Remove enough shielding from the Green wire to splice the Green/White wire into it. Tape it up.

That's it!

If you choose to do this you are solely responsible for all risks involved. This can be potentially dangerous.